



Wallshell Thermal Panoply™

CATALOG - v1.1

www.wallshell.com



THE SOURCE OF MANGNIFICENCE™

Wallshell Thermal Panoply™

Thermal Panoply™ is a composite thermal panel system that creatively combines our distinctly powder coated fiber cement board together with class A fire resistant insulation material, i.e. mineral wool, for the purpose of reducing energy consumption, increasing the insulation value of the wall system and improving the performance and appearance of the exterior wall cladding.

Wallshell

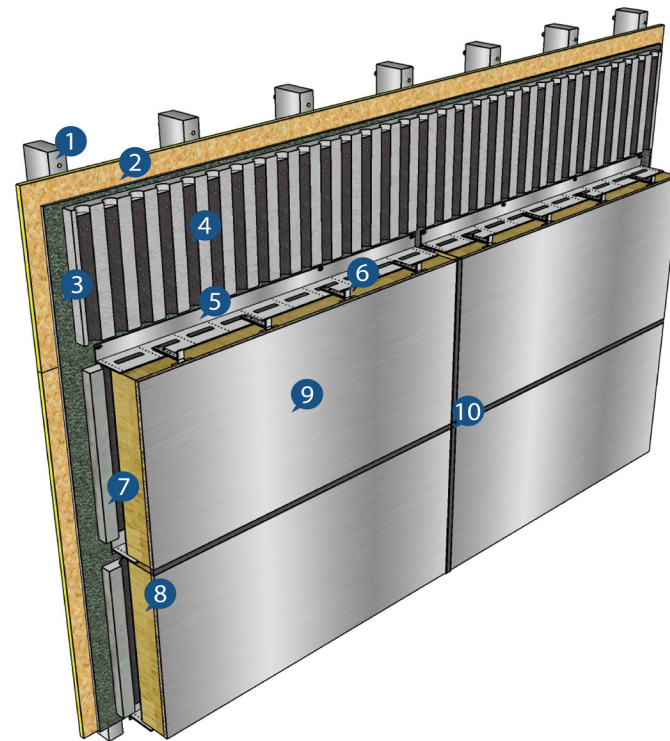
Contents

Prefab Thermal Panoply™ System	5
Advantages	6
Specification	7
LT Anchoring System	9
Thermal Panoply™ Finish	11
Ceramicshell™ Series	13
Metalshell™ Series	15
Fabricshell™ Series	17
Pearlshell™ Series	18
Granitedshell™ Series	19
Splendidshell™ Series	21

Prefab Thermal Panoply™ System

Wallshell Thermal Panoply™ Paneling System is the flagship of quality products. This fully engineered and designed DRY system is a high performance panel system. Similar to unitized curtain wall design, the system is designed utilizing continuous insulation and interlocking carrier board with extrusion while weep tubes are plugged to control water infiltration. This design provides a “dry” wall cavity condition without the reliance of vapor barrier. Any water that enters the system’s joinery is controlled and weeped back to the exterior. The system has been tested to AAMA 501 standards, this DRY system has proven its performance time and time again.

1. Steel Studs
2. Sheathing
3. Vapor Barrier
4. Adhesive Drainage Plane
5. L-profile Supporting Rail
6. T-profile Clip
7. Panel Backer Board
8. Panel Built-in Insulation
9. Finish Panel
10. Panel Joint Sealant and Weep Tube



Advantages

- No compromise to architect visions in either granite or modern metallic facade solution
- Durable fiber cement material and marine-grade corrosion resistant anchors
- Built-in insulation material increases thermal performance
- Support continuous insulation to achieve more energy efficient
- Almost no weather constraints for on-site panel installation
- Extra strength to resist higher wind load comparing to most of sidings and facade panels
- Cost effective comparing to natural granite and aluminum sheets, plus easy to mount
- High quality finish in strictly controlled manufacturing environment

Specification

Standard Sizes

1220 x 406mm(48" x 16") 1220 x 488mm(48" x 20")
 1220 x 610mm(48" x 24") 1220 x 812mm(48" x 32")
 2440 x 406mm(96" x 16") 2440 x 610mm(96" x 24") 2400 x 1220mm(96" x 48")

Other Properties

Unit Weight(kg/m²)

Backer Board Thickness(mm)	Insulation Board Thickness(mm)								
	38	44	57	70	83	95	108	121	133
2	19.31	19.93	21.27	22.61	23.95	25.19	26.52	27.86	29.10
3	20.61	21.23	22.57	23.91	25.25	26.49	27.82	29.16	30.40
4	21.91	22.53	23.87	25.21	26.55	27.79	29.12	30.46	31.70
6	24.51	25.13	26.47	27.81	29.15	30.39	31.72	33.06	34.30

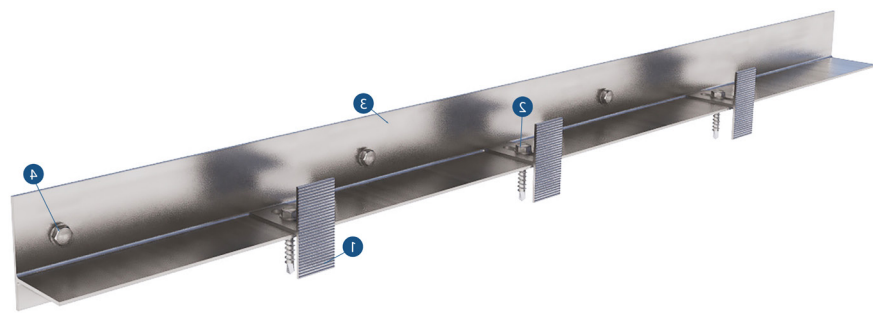
Unit Weight(lb/sqft)

Backer Board Thickness(inch)	Insulation Board Thickness(inch)								
	1-1/2	1-3/4	2-1/4	2-3/4	3-1/4	3-3/4	4-1/4	4-3/4	5-1/4
1/16	3.96	4.09	4.36	4.64	4.91	5.16	5.44	5.71	5.97
1/8	4.23	4.35	4.63	4.90	5.18	5.43	5.70	5.98	6.23
3/16	4.49	4.62	4.89	5.17	5.44	5.70	5.97	6.24	6.50
1/4	5.03	5.15	5.43	5.70	5.98	6.23	6.50	6.78	7.03



LT Anchoring System

Wallshell LT concealed anchoring system consists of T-profile clips, L-profile clips, and L-profile brackets for concrete substrate or T-profile rails for steel framed substrate. It serves as a horizontal anchoring system on the structural extrusion designed specifically for Thermal Panoply™ or Panoply™ to address the system wind load safety, fire safety and thermal performance. Its deliberately prefabricated oblong holes enable the anchored panel to be adjusted not only in the vertical and horizontal direction, but also along forward or backward direction.



1. T-profile Clip
2. Fastener
3. T-profile Rail
4. Substrate Fastener



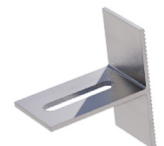
Plated Carbon Steel
Self-drilling Fastener
6.5x50mm



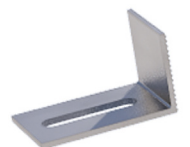
Stainless Steel AISI 304/316
Self-drilling Fastener
4.8x19mm



Aluminum T-profile Rail
2x15x40x42mm/2x15x40x62mm
2x15x40x82mm/2x15x40x102mm



Aluminum T-Profile Clip
1.5x50x20mm



Aluminum L-Profile Clip
1.5x50x20mm



1. T-profile Clip
2. Adjuster
3. L-profile Bracket
4. Substrate Fastener



Galvanized Steel
Fastener with Sleeve
ø: 8mm L: 60/80/100mm



Galvanized Steel Adjuster
ø: 4mm
L: 5mm



Steel L-Profile Bracket
2x50x35x42mm/2x50x35x62mm
2x50x35x82mm/2x50x35x102mm



Steel T-Profile Clip
1.5x50x20mm



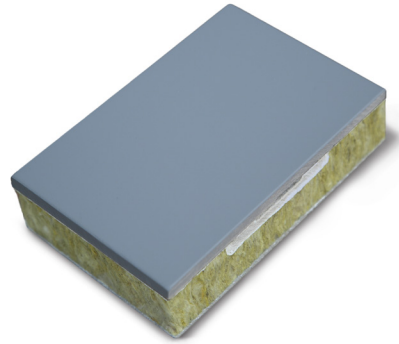
Steel L-Profile Clip
1.5x50x20mm

Thermal Panoply™ Finish

Wallshell indistinguishably coated Thermal Panoply™ panel can present various grades of touches and textures. As natural as granite or as shining as metals, Wallshell strictly controlled spray coating environment enables Wallshell to achieve the top qualities of its finish coat. Its unique natural look and timeless beauty provide an exciting and noble expression to every building. You can always find the irreplaceable finish in Wallshell to realize your imagination of the building.



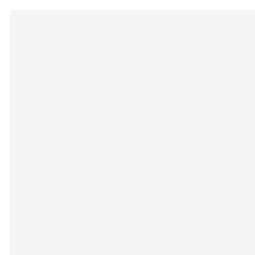
Ceramicshell™



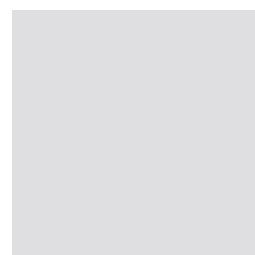
Texture: Satin

Customized Color: Upon Request.

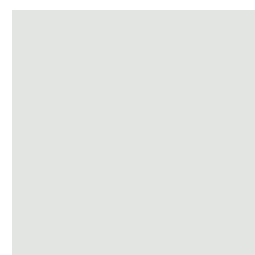
The Ceramicshell™ color series use high performance fluoropolymer powders to achieve the durability of colors and gloss. With satin grade texture, its various distinctively pigmented finishes can give the façade a modern and avant-garde expression without any color limitations.



110 Ceramic White



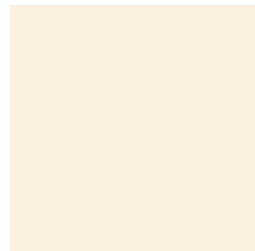
115 Porcelain White



130 Pearl White



150 Ivory White



201 Natural Beige



204 Light Tan



205 Light Brown



210 Golden Brown



305 Bright Orange



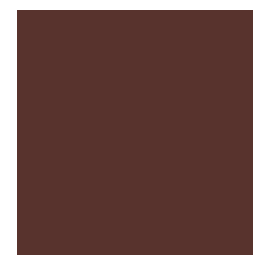
505 Bronze Gold



515 Clay Brown



535 Brick Red



555 Dark Red



615 Slate Gray



640 Dim Gray

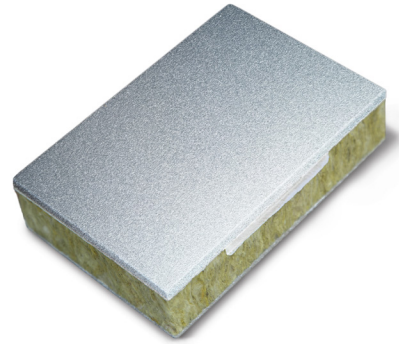


650 Fossil Gray



660 Ash Gray

Metalshell™



Texture: Satin

Customized Color: N/A

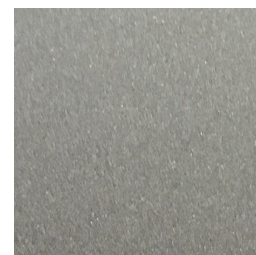
The Metalshell™ color series are Wallshell unique pigmented finishes. The selected metallic colors are coated with the super durable powders to achieve required performance as well as real metal expression, such as steel, copper, aluminum, silver or gold. These color series are usually selected by architects for high value buildings.



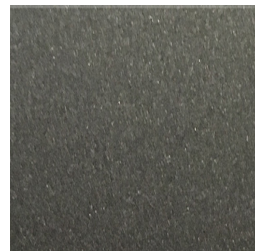
M10 Silver Flash



M15 Alum Flash



M30 Steel Flash



M40 Iron Flash



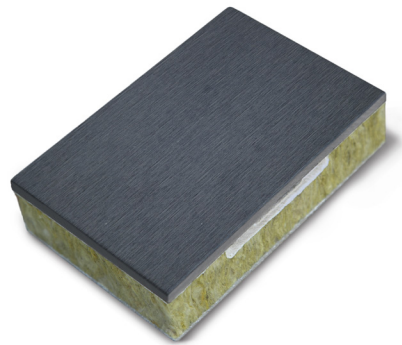
M50 Gold Flash



M70 Titanium Flash



Fabricshell™



Texture: Matte, Fabric

Customer Color: N/A

The Fabricshell™ color series create another noble and fabric-like expression in coating finishes. Characterized by a sanded surface without any pigmented coating, it naturally expresses the raw texture of the core fiber cement material.

It is its through-colored facade material that displays a strong scratch-resistance and UV-resistance throughout its life cycle. It also exhibits a high resistance to graffiti, stain and acid-base compounds and advantage of easy cleaning when contaminated.



F20 Gray Hill



F35 Volcanic Sand



F40 Gold Desert



F50 Sun Valley

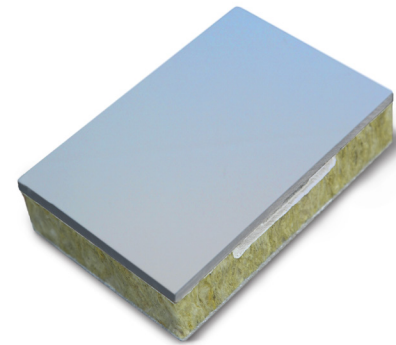


F55 Salt Lake



F59 Raw Sienna

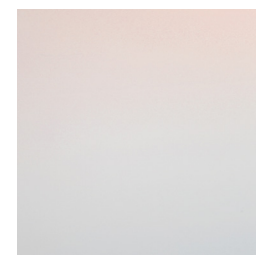
Pearlshell™



Texture: Satin

Customer Color: N/A

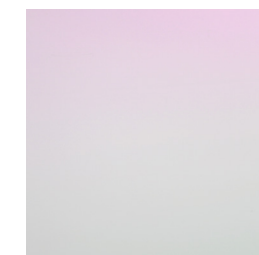
The Pearlshell color series are Wallshell distinctive pigmented finishes by adding pearl powder to achieve façade unexpected color illusive effect.



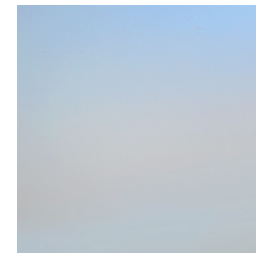
P10 Chameleon Apricot



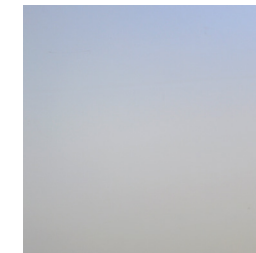
P20 Chameleon Cyan



P30 Chameleon Magenta

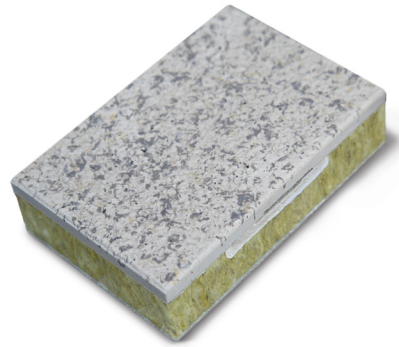


P40 Chameleon Blue



P50 Chameleon Indigo

Graniteshell™



Texture: Bush-Hammered, Flamed, Matte

Customized Color: Can be identical with any natural granite provided by customer.

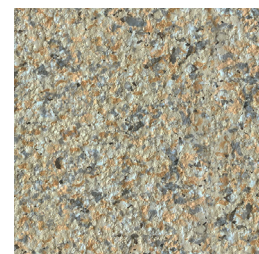
The Graniteshell™ color series are Wallshell unique pigmented finishes. With all the coating powders resourced from natural materials, its finishing displays an expression undistinguishable from natural granite. It also shows super strong UV-resistance throughout its life cycle, as well as a high resistance to graffiti, dust and acid-base compounds. It can be easily cleaned with an aqueous cleaner if contaminated.



G05 Mixed Rice



G08 Mixed Quinoa



G12 Brown Rice



G15 Yellow Sesame



G20 Mixed Grain



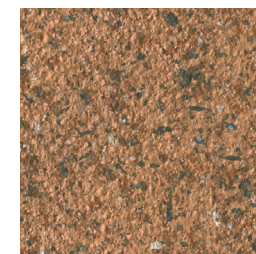
G30 White Sesame



G35 Blue Sesame



G40 Gray Sesame



G45 Rice Bran



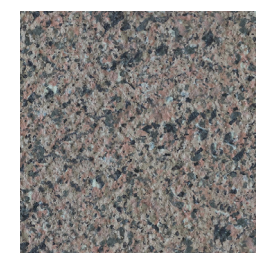
G50 Grain Sorghum



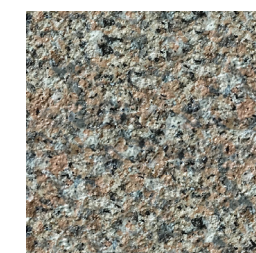
G55 Red Sorghum



G60 Dark Chestnut



G70 Rye Seed



G75 Coffee Rice



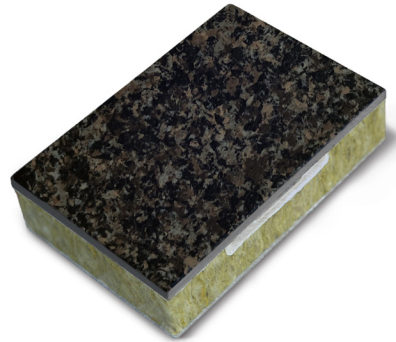
G80 Dark Sesame



G85 Black Quinoa



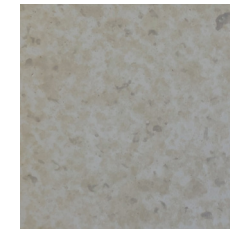
Splendidshell™



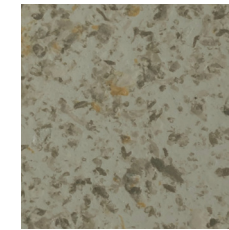
Texture: Matte

Customer Color: Upon Request

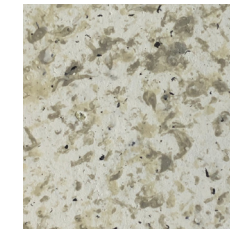
The Splendidshell™ color series, additional to its smoother surface than the Graniteshell™ series, can add as much as any imagination of flaky and chipped color effect to the pigmented finishes. It displays a super strong UV-resistance throughout its life cycle. It also shows a high resistance to graffiti, dust and acid-base compounds and advantage of easy cleaning when contaminated.



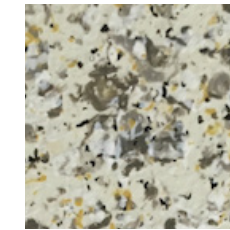
S03 White Oyster



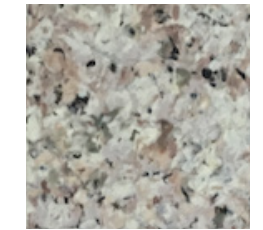
S05 White Coral



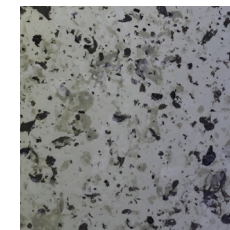
S10 White Floral



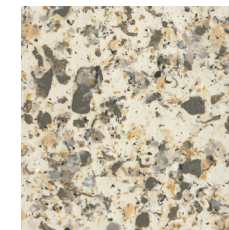
S13 Yellow Tremella



S15 Gray Oyster



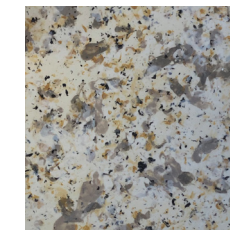
S20 Foraging Morel



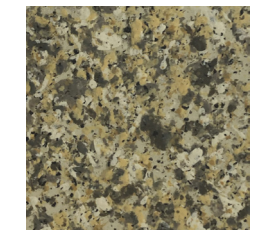
S23 Yellow Floral



S25 Coffee Floral



S28 Yellow Sorghum



S30 Wild Maitake



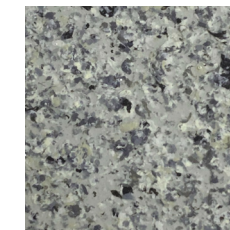
S33 Yellow Quinoa



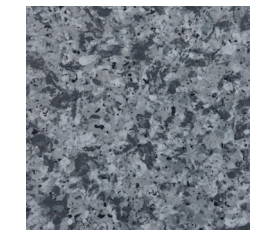
S35 Dried Clove



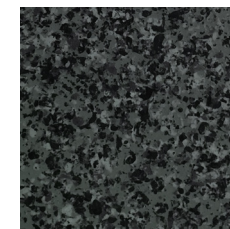
S40 Grifola Frondosa



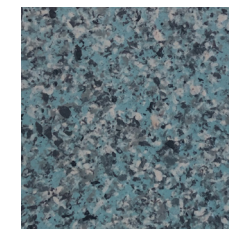
S45 California Fungi



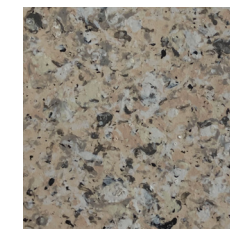
S50 Black Coral



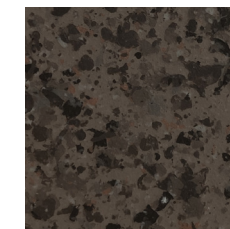
S55 Gray Floral



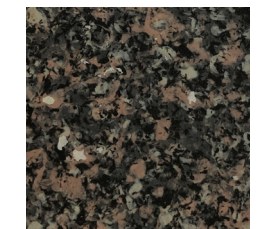
S60 Blue Iris



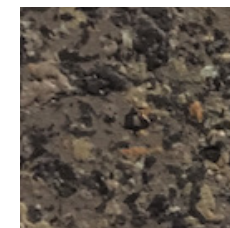
S70 Common Yarrow



S75 Coffee Sorghum



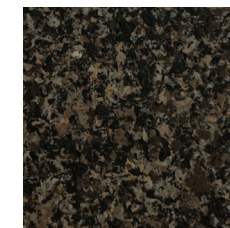
S78 Wild Truffle



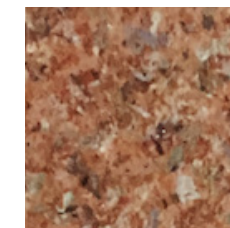
S80 Brown Sorghum



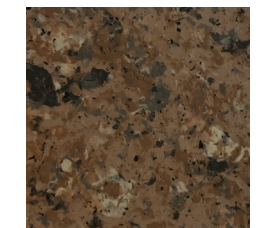
S83 Black Tremella



S85 Black Fungi



S90 Red Floral



S95 Orange Coral



Wallshell Thermal Panoply™
CATALOG
August 5, 2020



Walpanel Inc.
888-998-4611
www.wallshell.com